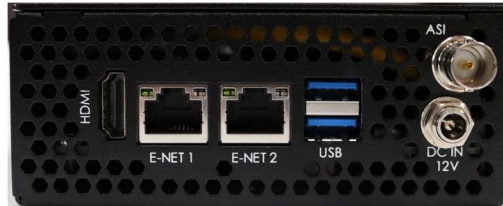




OX-1

Secure Reliable IP Streaming

ASI to TSoIP/TSoIP to ASI, SMPTE 222, SRT, Zixi, RIST



Made in the USA

PRODUCT DESCRIPTION

The OX-1 is a compact, secure reliable IP streaming appliance supporting any combination of SRT, Zixi, RIST and SMPTE 2022 streaming formats. OX-1 is ideal for streaming media over busy LANs, the unpredictable public Internet, and microwave links with an IP interface.

When configured as a sender, the OX-1 accepts a MPEG transport stream over IP, encrypts the content, and encapsulates the secured packets in a transport stream wrapper based upon the selected streaming protocol. When configured as a receiver, the process is reversed.

An optional ASI hardware interface is available thus adding the capability to convert an ASI transport stream to an IP transport stream prior to processing the IP stream for reliable, low latency delivery over unpredictable Internet and LAN connections.

When configured as a receiver with the optional ASI interface, the incoming IP stream may be converted to ASI or left in the TSoIP or converted to any other supported IP streaming format.

FEATURES LIST

- SMPTE 2022, SRT, RIST & Zixi
- ATSC 3.0 STLTP over RIST/SRT
- AES 128/192/256-bit encryption
- SNMP remote monitoring
- Configurable as source/sender or destination/receiver
- 4 x Outputs for each input
- Licensable for up to 8 inputs
- 2 Configurable Ethernet Ports
- ASI I/O Interface (optional)
- External 12 VDC Power Supply

VISION + INNOVATION

March 2024. Specifications subject to change without notice.

DTV Innovations | 2402 Millennium Dr. | Elgin, IL 60124 | ☎ +1 847.919.3550 | www.dtvinnovations.com



OX-1

Secure Reliable IP Streaming

ASI to TSoIP/TSoIP to ASI, SMPTE 2022, SRT, Zixi, RIST



Specifications	
Front panel LED indicators	Power, mode, status, and input
ASI Interface (option)	
Connector	BNC (F) 75 Ohm
Data rate input	270 MHZ +/-10ppm
Data rate output	270 MHZ +/-3ppm
Logic levels	800 mV +/-10%
ASI Burst	213 Mbps
Ethernet Interface Data Port	
Connector	Ethernet -IEEE 802.2ab RJ-45
Data rate	100/1000 Mbps auto sensing
IP Protocols	Unicast, Multicast, UDP, RTP, SMPTE 2022-1/-2, SRT, RIST, Zixi
SMPTE-2022 FEC	L 1-20, D 4 -20, LxD 4 - 100
IP Streaming Rate	Up to 150 Mbps
MPEG-TS protocol conversion	ASI to TSoIP / TSoIP to ASI (ASI interface option required)
Encryption	AES 128-bit & 256-bit (RIST) AES 128-bit, 192-bit & 256-bit (SRT)
Adaptability	Configurable as a Source/Sender or Destination/Receiver
Inputs	Up to 8 licensable inputs (1 of which may be ASI)*
Outputs	Up to 4 output streams per input* (1 of which may be ASI if not used as an input) *Total number of cumulative outputs may be limited by IP streaming protocols, link condition, streaming protocol selected, and other variables.
Control & Monitoring	
Connector	Ethernet -IEEE 802.2ab RJ-45
Data rate	100/1000 Mbps auto sensing
Security	Account and password
Presentation	Integrated web server
SNMP	SNMP remote monitoring
Secondary Control Interfaces	
Video	HDMI
Keyboard/Mouse	USB
Physical	
Dimensions	1.75"H x 4.63" W x 9.63" D
Power	12 VDC locking connector
Cooling	Forced air front to rear flow
Warranty	1-yr. standard, Extended Warranty option is available

VISION + INNOVATION

March 2024. Specifications subject to change without notice.